

Colline.

Colline

designed by Aleksandra Mętlewicz & Mateusz Gaczkowski

A specialized line of acoustic wall panels that can create a pleasant soundscape in any given space. Cover the whole wall seamlessly with a composition that flows like hills and pleases the eye with a variety of colors.

COLLINE FAMILY

WORKS BEST IN: Conference Room,
Chillout Room

Wall



KEY CHARACTERISTICS

- Possibility to cover whole walls seamlessly from side to side
- Possibility to cut holes for lamps and electrical outlets
- 60 colors and 2 categories of felt (synthetic and wool) to choose from
- Compatible with NanoFelt™ Ag technology for additional micro-biological protection with silver particles
- Sound Absorption - Class D
- Flame Resistance
- Awards: RedDot Winner 2022, iF Design Awards 2022, Dezeen longlisted 2022, New York Design Awards 2022 Gold



*Low-key or high-profile
– Colline can either
supplement your interior
design or become the
main star.*





FOLLOW YOUR VISION

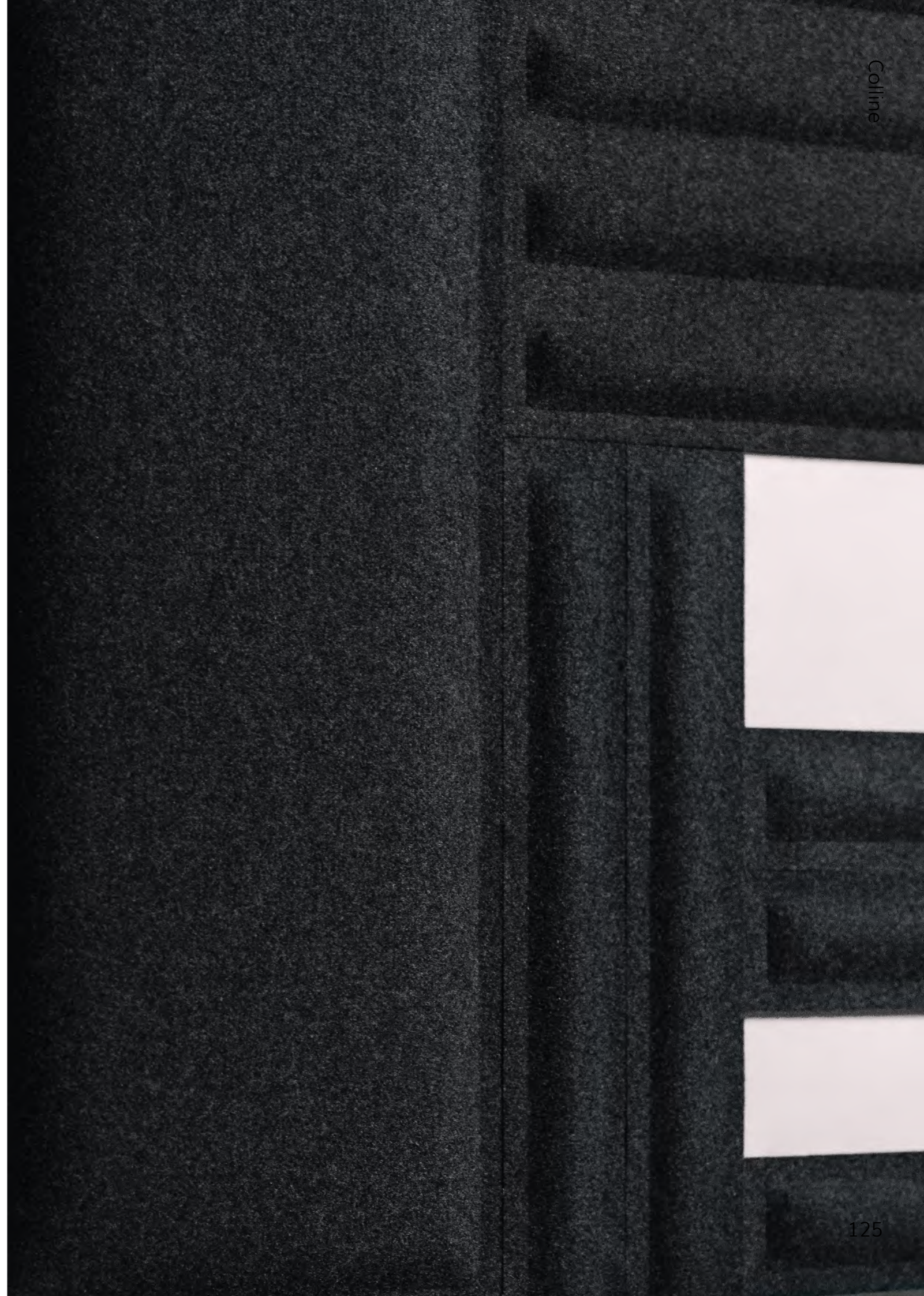
Flat parts of Colline panels can be cut to the desired width or used as a placement for lamps and electrical outlets. Add metal slats or LED bars for a more sophisticated feeling.





MODULAR AND ADAPTABLE

Colline will fit in perfectly in every space and give room to the continuous improvement - from single elements to complex sets.





Use Colline panels together with our Basalt product family and transform your walls into canvas for stunning artworks.

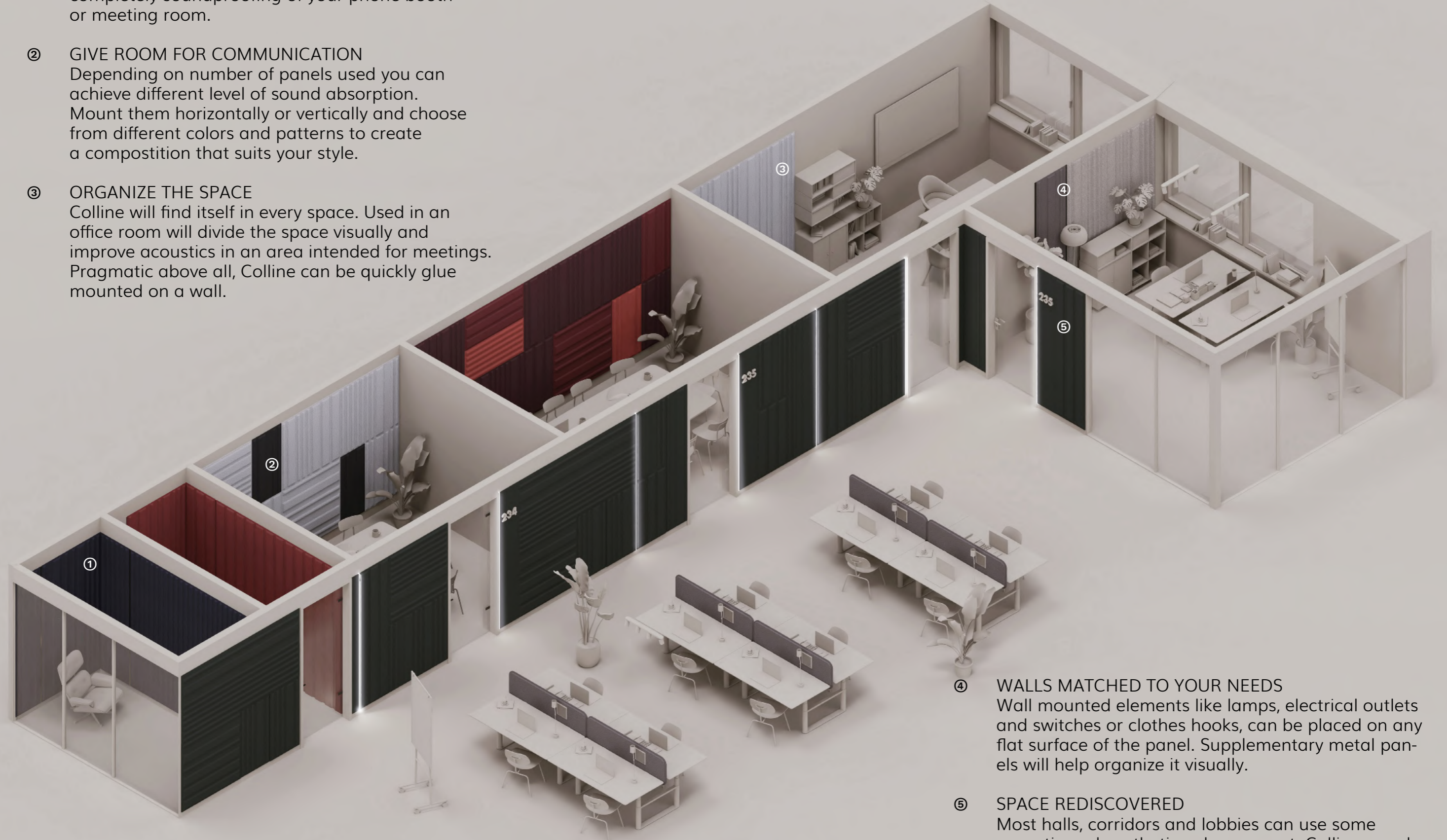


SIMPLE YET VERSATILE

Use multiple panels to cover the entire wall seamlessly or use single, disconnected pieces as decors.

All possibilities of Colline

- ① **THE HIGHEST LEVEL OF FOCUS**
Cover the entire space with panels for a nearly completely soundproofing of your phone booth or meeting room.
- ② **GIVE ROOM FOR COMMUNICATION**
Depending on number of panels used you can achieve different level of sound absorption. Mount them horizontally or vertically and choose from different colors and patterns to create a composition that suits your style.
- ③ **ORGANIZE THE SPACE**
Colline will find itself in every space. Used in an office room will divide the space visually and improve acoustics in an area intended for meetings. Pragmatic above all, Colline can be quickly glue mounted on a wall.



- ④ **WALLS MATCHED TO YOUR NEEDS**
Wall mounted elements like lamps, electrical outlets and switches or clothes hooks, can be placed on any flat surface of the panel. Supplementary metal panels will help organize it visually.

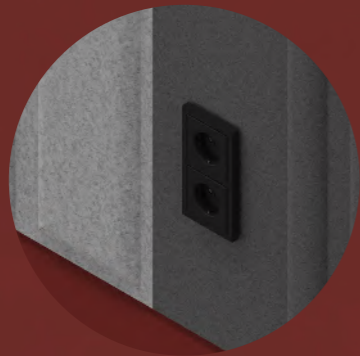
- ⑤ **SPACE REDISCOVERED**
Most halls, corridors and lobbies can use some acoustic and aesthetic enhancement. Colline panels together with LED bars can make every walk through the office a breathtaking journey.

Design It Yourself – basic mode

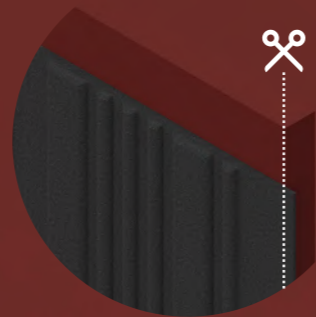
Create your own wall arrangement. Colline panels can be easily customised to the layout of your wall. Remember, at the end of your arrangement there must always be a cuttable panel placed.



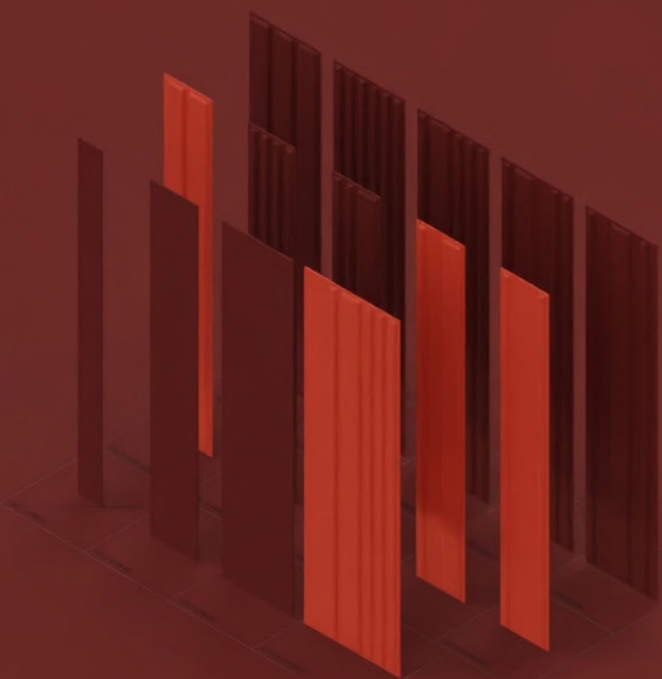
Detail of lamp and switch fastening on the panel



Detail of electrical outlet fastening on three-layer felt



Detail of cutting the panel along the edge of a wall



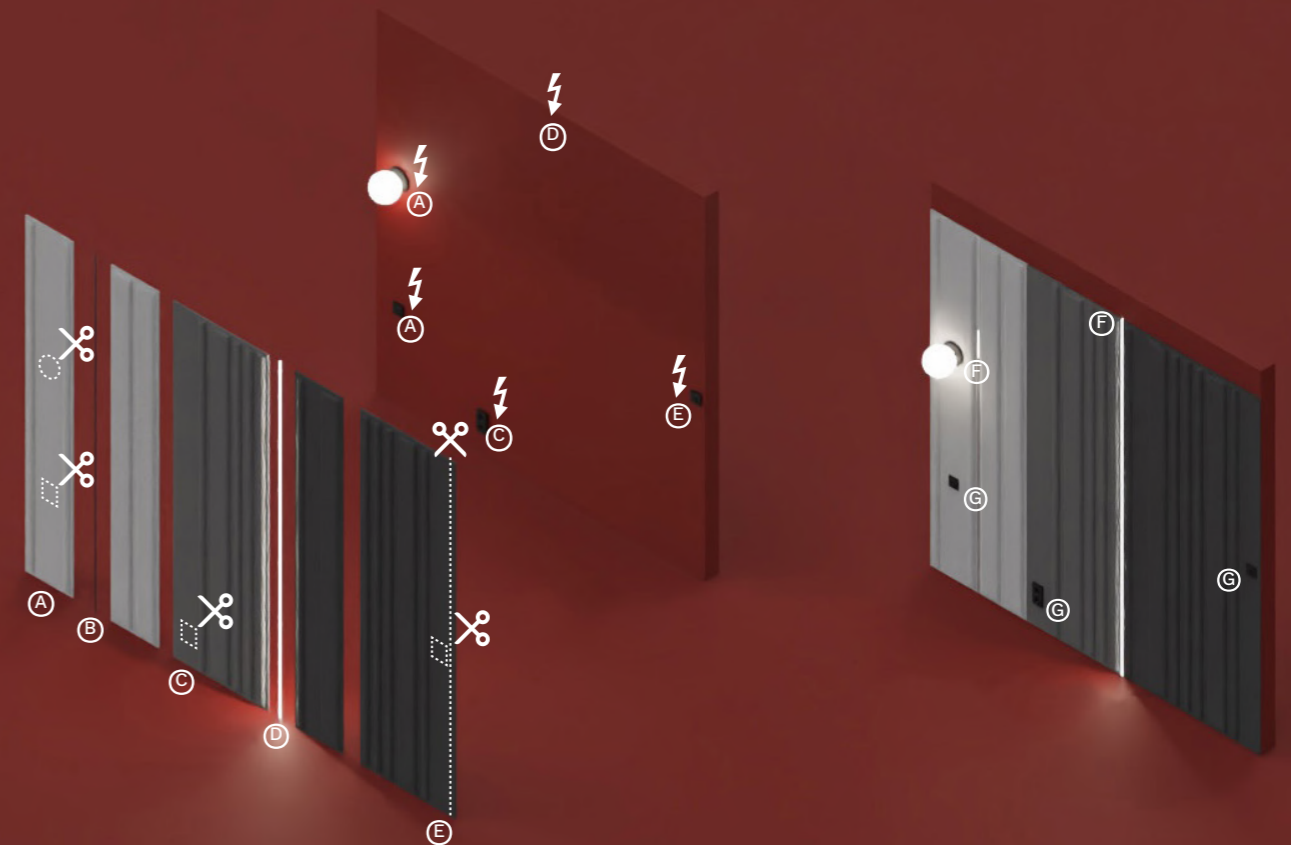
STEP 1
Choose panels that match your vision – size, 3D motif or flat surfaces and colour. Remember to always include a cuttable panel at the end of the wall arrangement.



STEP 2
Decide on accessories - metal slats and LED bars.

- Ⓐ Use a panel with flat, cuttable surface for parts of your wall with electrical elements. Pro tip: Placing all the outlets and switches in the vertical line will make your composition more aesthetically pleasing.
- Ⓑ A metal slat will add distinctive character to the entire composition.
- Ⓒ Flat areas can be cut precisely to the shapes of electrical elements.
- Ⓓ Plan a position of a LED bar in advance – including a cord connector in the wall dedicated to a LED bar. Pro tip: Choose a shade of the light.

- Ⓔ At the end of your wall arrangement there must always be a cuttable panel. In a flat surface, you can also cut a hole, e.g. for an electrical outlet.
- Ⓕ Mount the accessories.
- Ⓖ Wire the electrical accessories.
- ✂ Cutting panels
- ⚡ Electricity spot

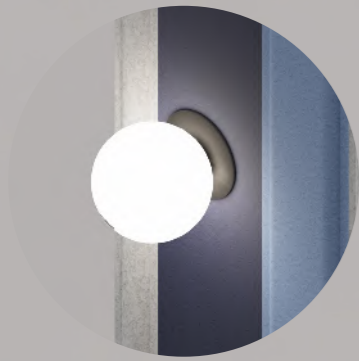


STEP 3
Decide on accessories - metal slats and LED bars.

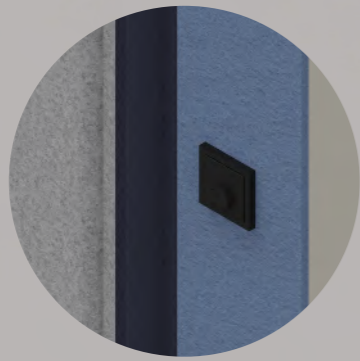
STEP 4
All done. Enjoy your tailor-made wall composition.

Design It Yourself - advanced mode

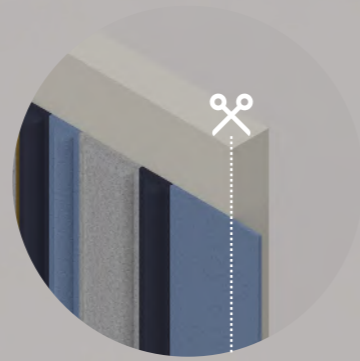
Channel your inner artist and create more advanced designs. Plan every single bulge and use multiple colours for a more personal experience. Remember to always use a flat felt cuttable panel at the end of your wall arrangement.



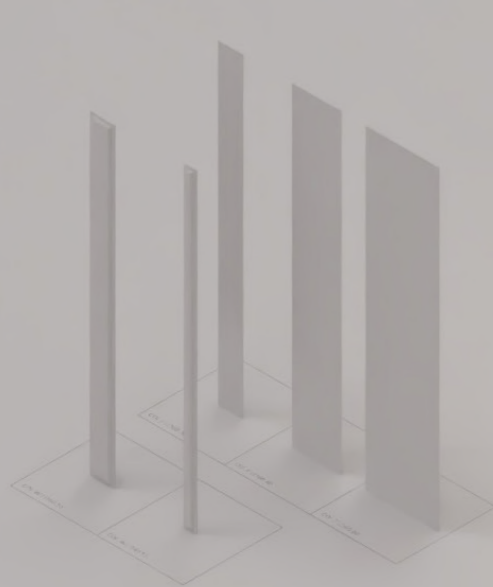
Detail of lamp and switch fastening on the panel



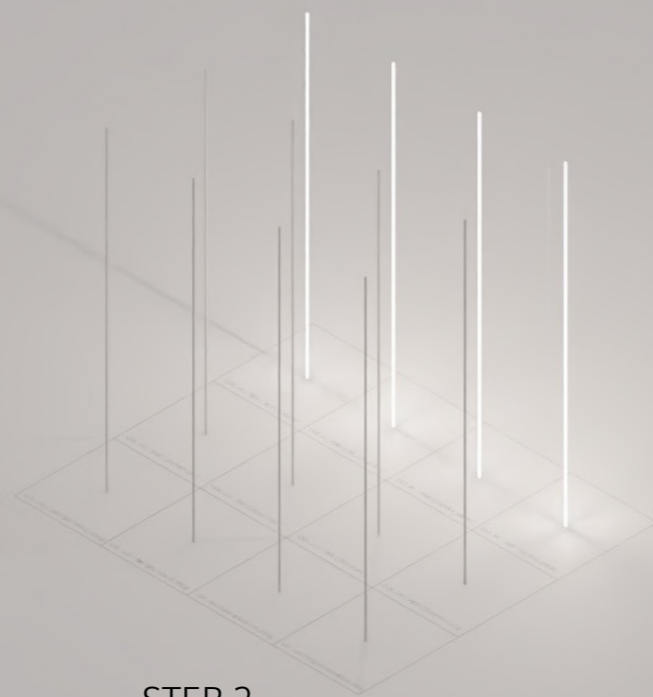
Detail of electrical outlet fastening on three-layer felt



Detail of cutting the panel along the edge of a wall



STEP 1
Choose panels that match your vision – size, 3D motif or flat surfaces and colour. Remember to always use a flat felt cuttable panel at the end of your wall arrangement.



STEP 2
Decide on accessories – metal slats and LED bars.

- Ⓐ 10 and 20 cm panels with 3D motif can be used to create exceptional wall designs - let the bulges flow in a way you desire.
- Ⓑ Use a panel with flat, cuttable surface for parts of your wall with electrical elements. Pro tip: Placing all the outlets and switches in the vertical line will make your composition more aesthetically pleasing.
- Ⓒ Plan a position of a LED bar in advance - including a cord connector in the wall dedicated to a LED bar. Pro tip: Choose a shade of the light.

- Ⓓ A metal slat will add distinctive character to the entire composition.
- Ⓔ At the end of the wall arrangement always use a flat felt panel to cut perfectly to the size of your wall - in that case, also to cut a hole for electrical appliances.
- Ⓕ Mount the accessories
- Ⓖ Wire the electrical accessories
- ✂ Cutting panels
- ⚡ Electricity spot
- * Minimum purchase requirements for 10 cm panels start at 5 pieces in the same color and 20 cm panels start at 3 pieces.



STEP 3
Decide on accessories – metal slats and LED bars.

STEP 4 – ALL DONE :)
All done. Enjoy your tailor-made wall composition.

Meet our Colline Family

COLLINE PANEL WITH 3D MOTIF

sizes available
 H 260 x 40 / 60 cm
 H 240 x 40 / 60 cm
 H 120 x 40 / 60 cm

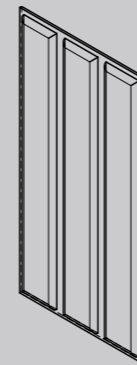
COL.W.H120.40A



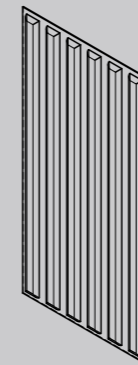
3D MOTIF available

60 cm panels

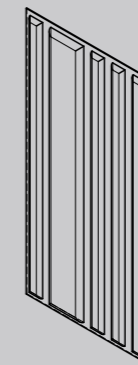
COL.W.H120.40A



COL.W.H120.60B



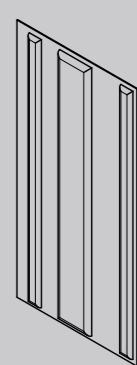
COL.W.H120.60C



COL.W.H120.60D



COL.W.H120.60E



3D MOTIF available

40 cm panels

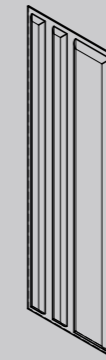
COL.W.H120.40A



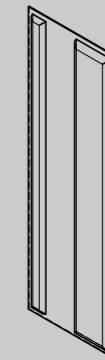
COL.W.H120.40B



COL.W.H120.40C



COL.W.H120.40D



COL.W.H120.40E



COLLINE SINGLE PANEL

sizes available
 H 240 x 10 / 20 cm
 H 260 x 10 / 20 cm
 H 120 x 10 / 20 cm

COL.W.H120.20



COLLINE THREE-LAYER FELT CUTTABLE PANEL

sizes available
 H 260 x 20 / 40/ 60
 H 240 x 20 / 40/ 60
 H 120 x 20 / 40/ 60

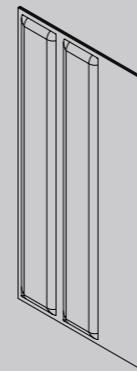
COL.F.H120.20



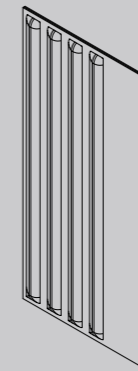
COLLINE PANEL WITH THREE-LAYER FELT CUTTABLE AREAS

sizes available
 H 260 x 60 / 80
 H 240 x 60 / 80
 H 120 x 60 / 80

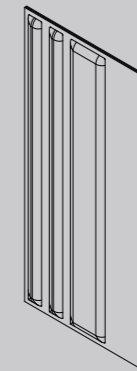
COL.WF.H120.60A



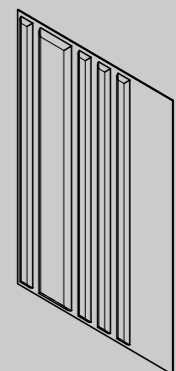
COL.WF.H120.60B



COL.WF.H120.60C



COL.WF.H120.80C



COLLINE ACCESSORIES

sizes available
 H 260 x 1 cm
 H 240 x 1 cm
 H 120 x 1 cm

METAL SLAT

colour
 gold/silver/black/copper

finishes
 matt/sheen

LED BAR

colour
 silver/black

light colour
 3000 K / 4000 K

The Materials

FELT

Category C felt

Product Specification

Technical data

Composition **100% Polyester**

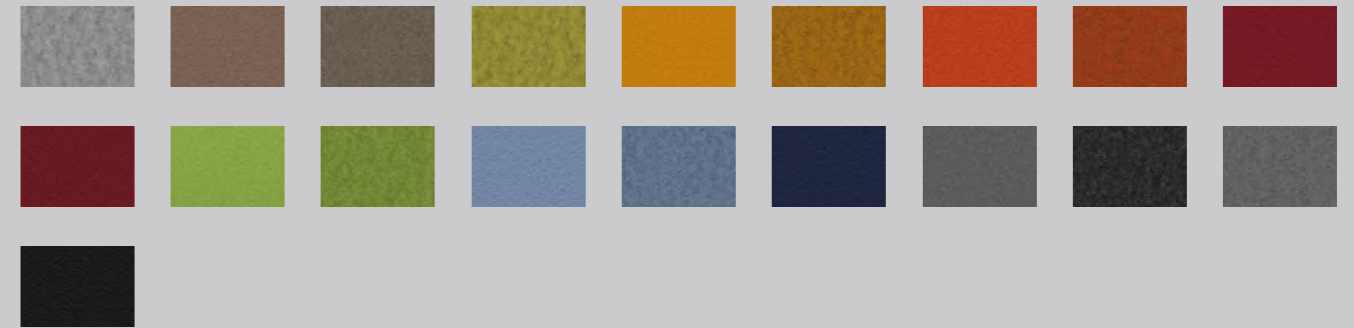
Mass per unit area **500 ±10% g/m²**

Thickness **3 ±10% mm**

Flammability **EN 13501-1+A1: B-s1, d0**

ASTM E-84-18: Class A

Sound absorption **UNE-EN ISO 354: αW=0,15 (H)**



Category D felt

Product specification

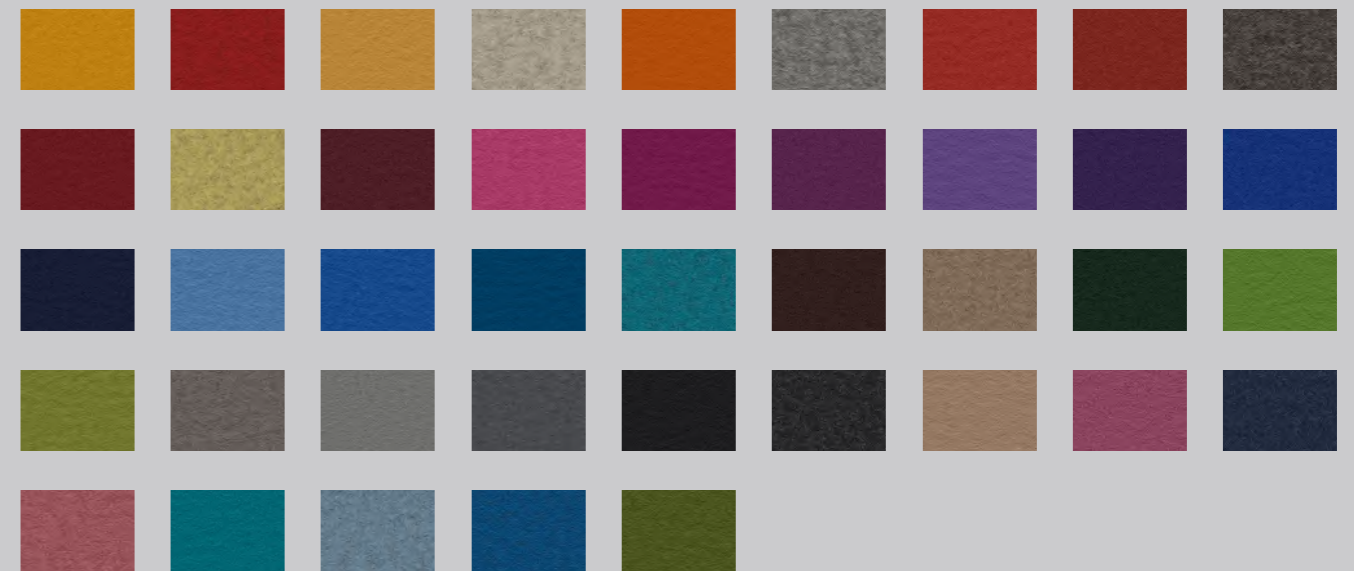
Technical data

Composition **100% Wool**

Mass per unit area **280 ±10% g/m²**

Thickness **3 ±10% mm**

Flammability **EN 13501-1 B fl - s1 (B1)**



METAL SLAT

Finishes **matt or gloss**



LED BAR

Frame

Colour: **Silver or Black**

Light

Colour: **3000K or 4000K**

* in the case of felt as the leading material, there may be differences in the thickness of the panels and gaps up to 3 mm long. There are differences in thickness when combining different categories of felt.

	JASPER	LEAVES	SILENTUM	HEAVEN BOOTH	COLLINE	BASALT	HANGING DIVIDERS	SKY SQUARE
PRODUCT FAMILY	Comprehensive	Comprehensive	Specialized	Specialized	Specialized	Specialized	Supplementary	Supplementary
SHORT DESCRIPTION	Wide line of acoustic furniture that will fit well in even busiest and noisiest office space.	Set of acoustic furniture that will make any space more relaxing - both visually and acoustic-wise.	Prestigious family for special tasks. Merges sophisticated design with the highest sound absorption efficiency.	Set of acoustic dividers that you can dynamically arrange in whole space organizing sets.	Product family that transforms any wall into a soothing landscape that improves acoustics.	Easy-to-use set of acoustic wall panels that enable you to create stunning visual compositions.	Set of hanging panels that provide privacy, as well as absorb sounds to make the office space more pleasant	Complementary product for places with drop ceilings that needs an easy acoustic upgrade.
WORKS BEST IN:								
Open Space	●	●		●			●	
Call Center	●			●				
Casual Collaboration Space	●	●					●	
Management's Office			●		●	●		
Conference Room			●		●	●		
Agile/Project Room				●				
Chillout Room					●	●		
Anyplace with drop ceilings								●
FUNCTIONALITIES	ROOM DIVIDERS -Free Standing Room Divider DESKS -Behind the desk -Bench Pin -Bench -Mobile desk -Modesty panel WALLS AND GLASS -Square -Circular HANGING -Horizontal -Vertical	ROOM DIVIDERS -Free Standing Room Divider DESKS -Behind the desk -Bench Pin -Bench -Mobile desk -Modesty panel WALLS AND GLASS	ROOM DIVIDERS -Pillar WALLS AND GLASS -Wall -Corner HANGING -Vertical	ROOM DIVIDERS -Connectable Room Divider	WALL	WALL	HANGING DIVIDER	CEILING PANELS

Need more info? Contact us

hello@acustio.com
+48 512 574 915

Office:
Jutrzenki 12 A,
Local 3
02-233 Warsaw
Poland

Download 3d/2d models, catalogs, certificates,
color cards, and more at:

